

Updating Sacramento River Hydraulic and Habitat Modeling Data

CWEMF

September 25, 2024

Dr. Rod Wittler
US Bureau of Reclamation





— BUREAU OF —
RECLAMATION

Rod Wittler

530-262-3670

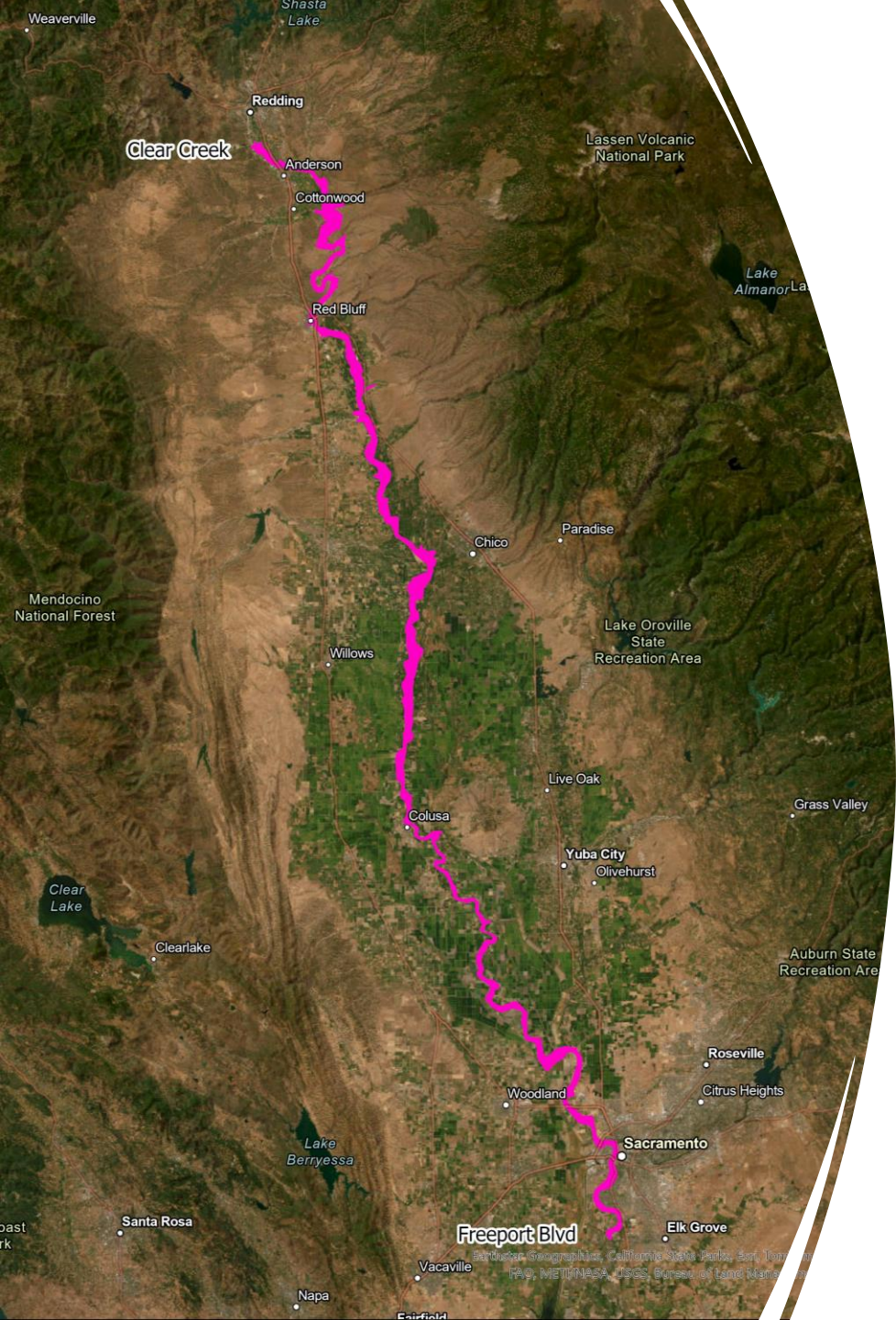
rjwittler@usbr.gov



**Yurok Tribe Fisheries Department
Technical Services Program**

5435 Ericson Way, Suite 1
Arcata, CA 95521





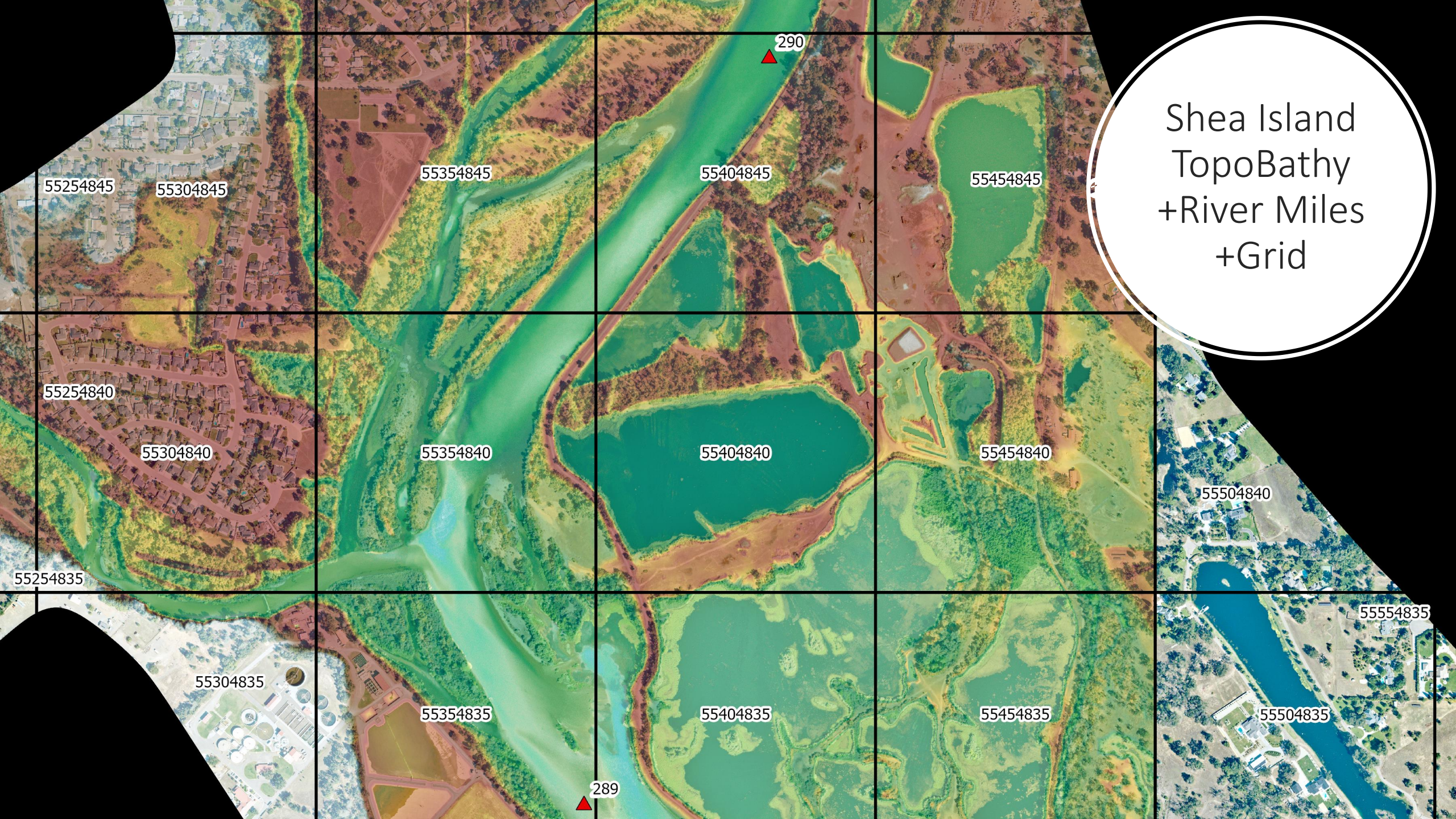
Extents of Imagery

Clear Creek to Freeport



Extents of TopoBathy

Clear Creek to Wilkins Slough



Shea Island
TopoBathy
+River Miles
+Grid

55254845 55304845

55354845

55404845

55454845

55254840

55304840

55354840

55404840

55454840

55504840

55254835

55304835

55354835

55404835

55454835

5554835

55504835

289

290



Shea Island
TopoBathy

An aerial photograph showing a river flowing into a larger body of water. The river is surrounded by dense green vegetation and some sandy or rocky banks. A white circular callout is overlaid on the top left of the image, containing the text 'Shea Island Substrate'.

Shea Island
Substrate



Shea Island
Large Wood

An aerial photograph of a slough system. A central, narrow channel of water flows from the top to the bottom of the frame. To the left of this channel is a large area of dense, green, scrubby vegetation. To the right is a wide, light-colored sandy or silty area, likely a floodplain or delta, with scattered patches of green vegetation. A road or path crosses the right side of the slough, with a white vehicle visible. In the bottom left corner, a portion of a paved road with yellow lane markings is visible. A white circular callout with a thin black border is positioned in the upper left quadrant, containing the text 'East Sand Slough' in a black, sans-serif font.

East Sand
Slough

How to Access this Information

Opentopography.org

- <https://portal.opentopography.org/datasets>

Estimated to be available later this fall.