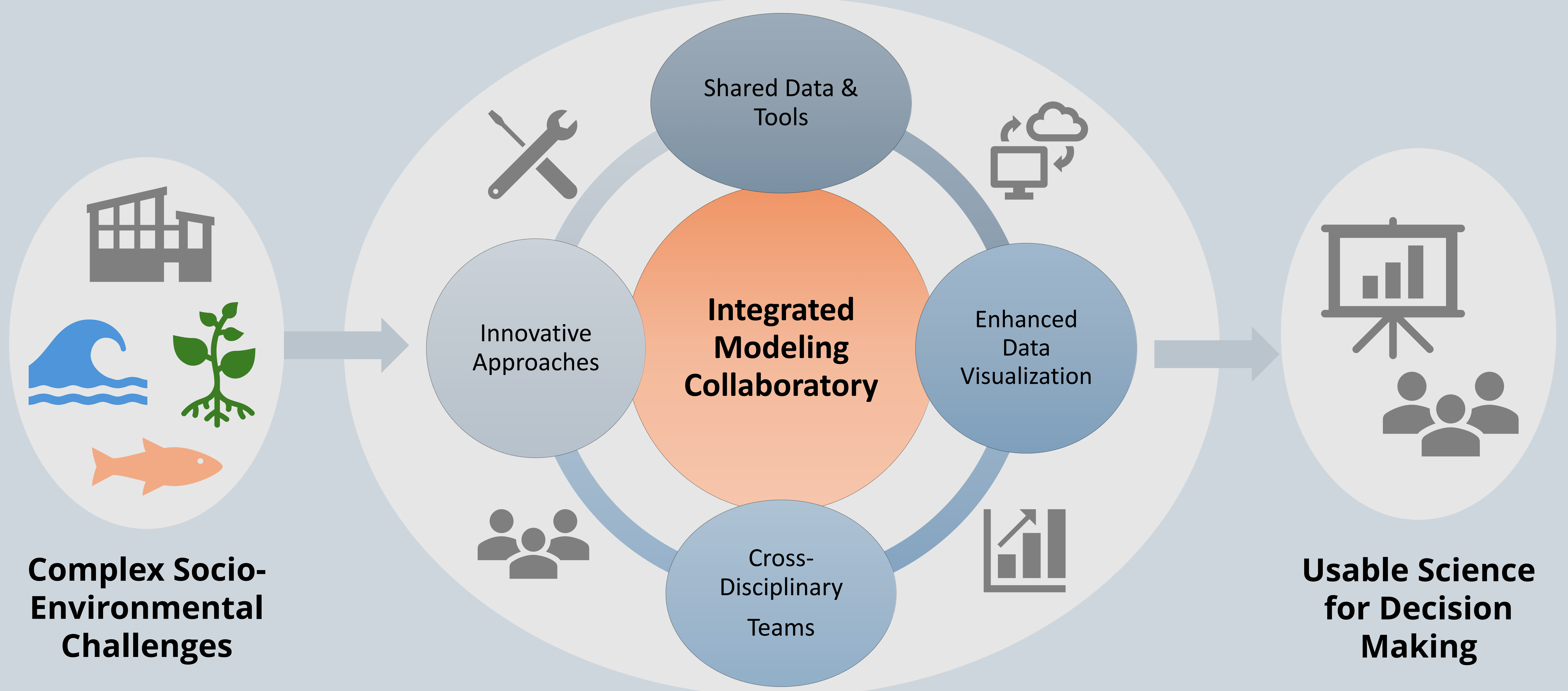


# The Collaboratory Starts Now



The Delta Science Program is serving as catalysts, coordinators, and facilitators of community-based building of the core and foundational elements of the Collaboratory. Current implementation plan includes simultaneous leadership team formation, strategic plan development, and use-case profiling.

## Collaboratory core elements

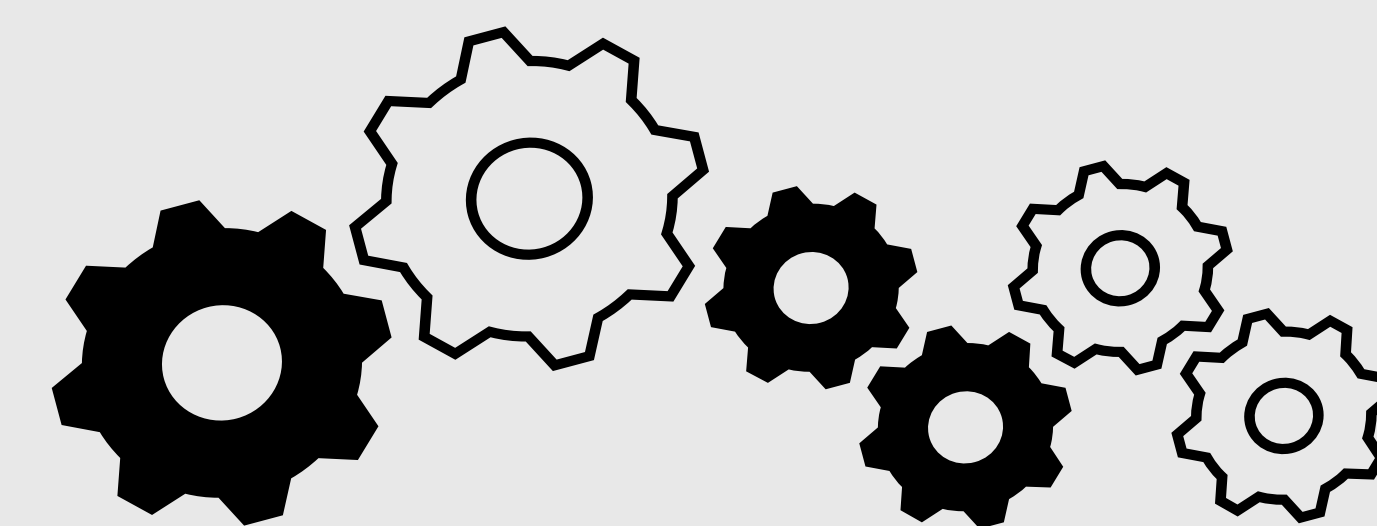
- Leadership and organization
- Human resources
- Cyberinfrastructure
- Integrated modeling framework
- Best practices and protocols
- Synergy hub – networking
- Accessibility – data, tools, people

## Example use-cases

- Salinity management
- Harmful algal blooms
- Food web modeling
- Climate change and sea level rise
- Water management and salmon
- Flood & drought analysis
- Big data synthesis and visualization

## Products and services

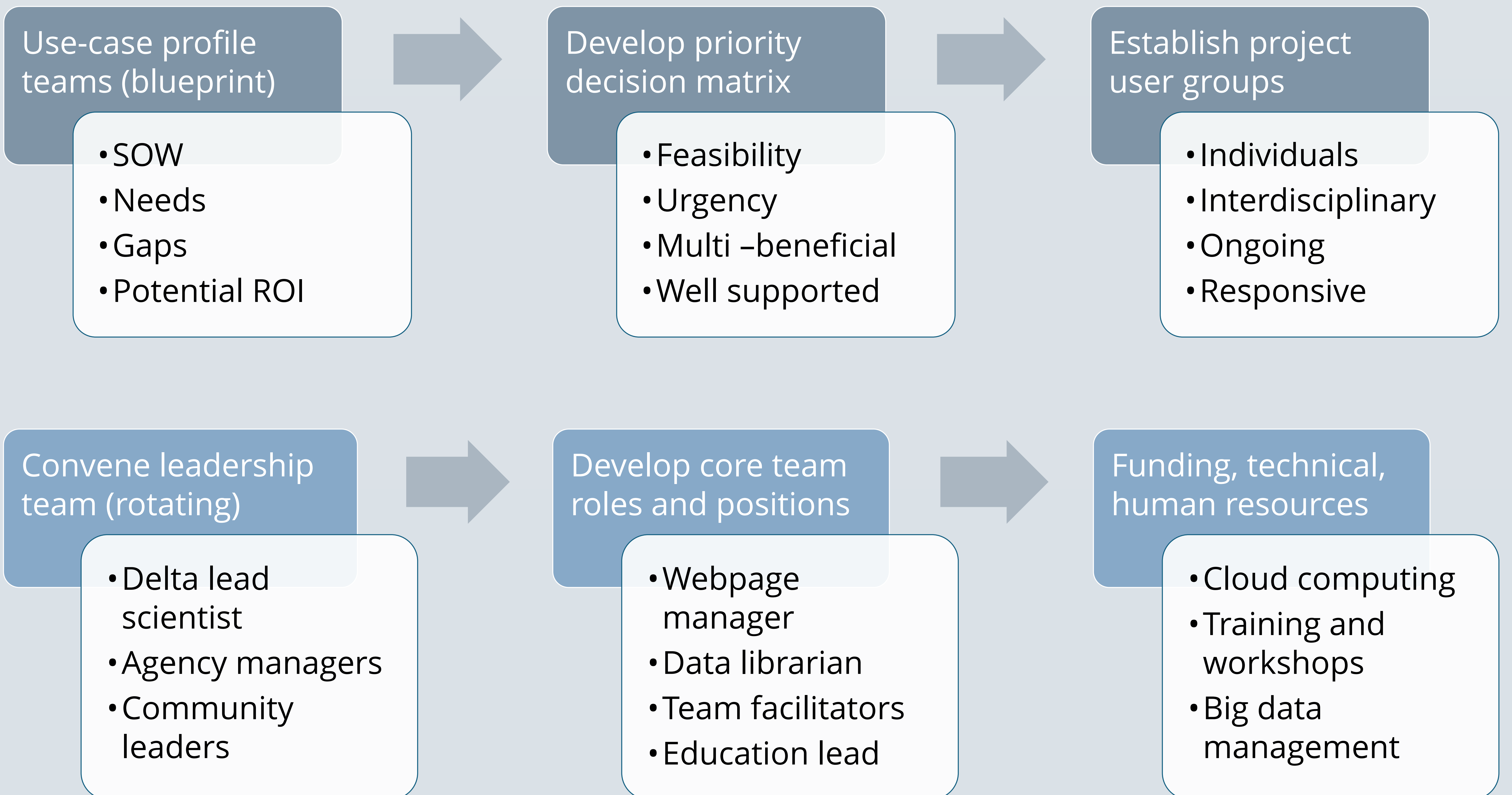
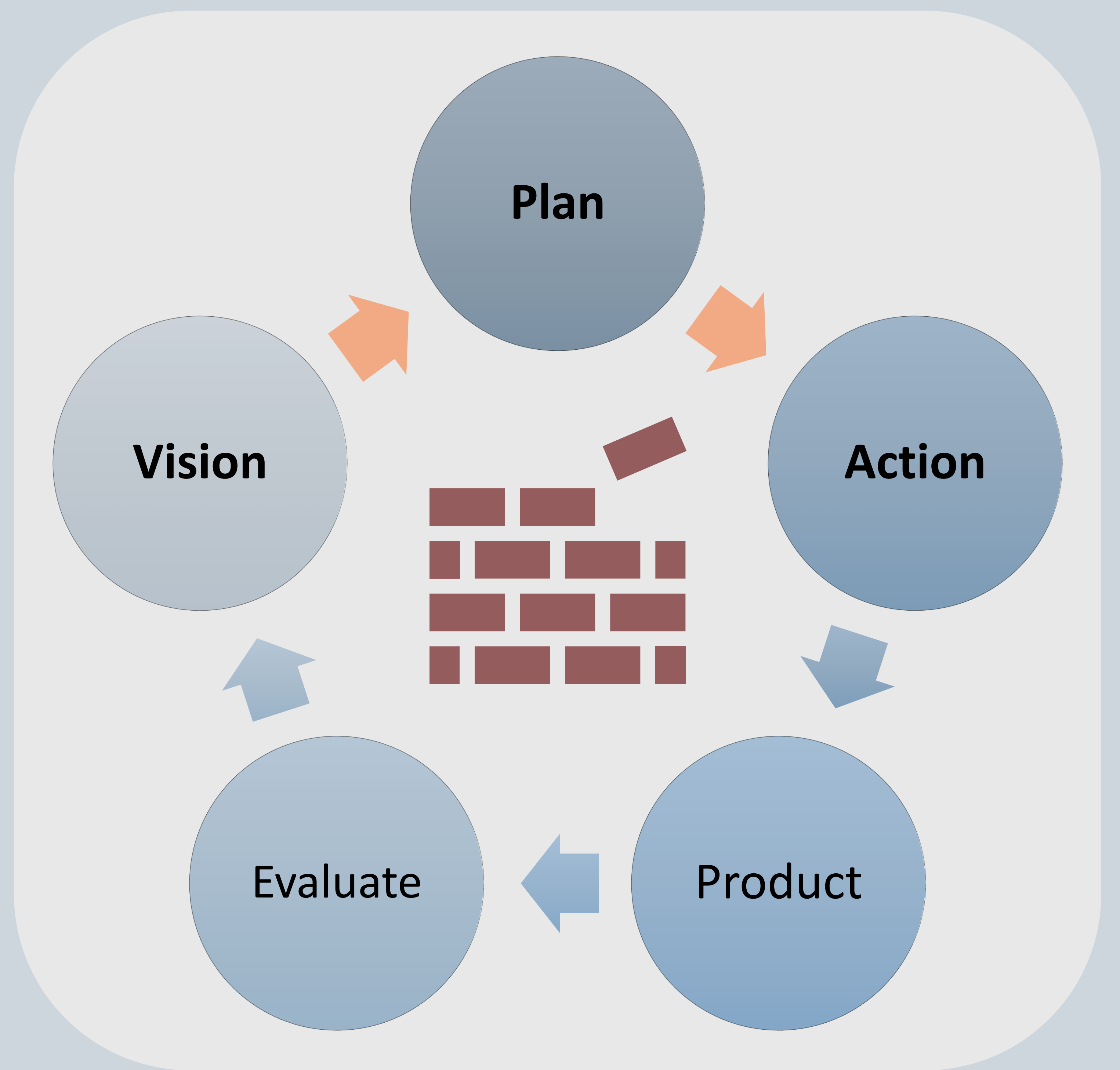
- Modeling inventory
- Data library
- Group/team facilitation
- Online forum
- Publishing & visualization assistance
- Knowledge base access
- Training and workshops



*Progress and success is achieved through positive and iterative feedback loops*

# Collaboratory use-cases

- By exploring multiple use-cases simultaneously, we can better understand the needs and gaps within the science and modeling community
- Use-case profiling will provide essential real-world details, helping us prioritize the allocation of limited resources for laying the Collaboratory's foundational bricks



**We want to hear from you! Send us a message.**



**Ben Geske and Maggie Christman**  
 Delta Science Program  
 Delta Stewardship Council  
 715 P Street, Ste. 15-300, Sacramento, CA 95814



**[Collaboratory@deltacouncil.ca.gov](mailto:Collaboratory@deltacouncil.ca.gov)**