



# Improved Groundwater-Surface Water and Water Allocation Models and Data to Support Water Management in the Scott River and Shasta River Watersheds

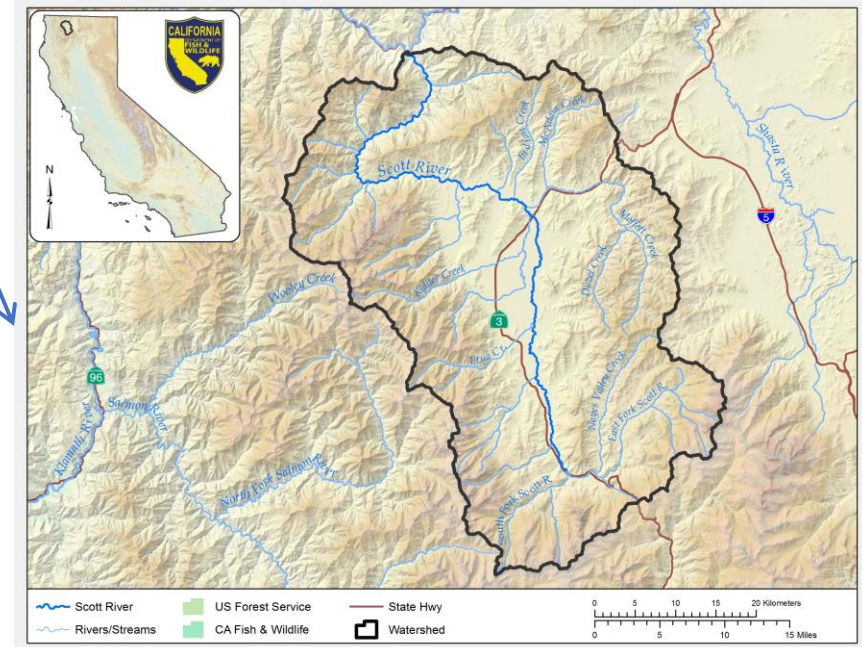
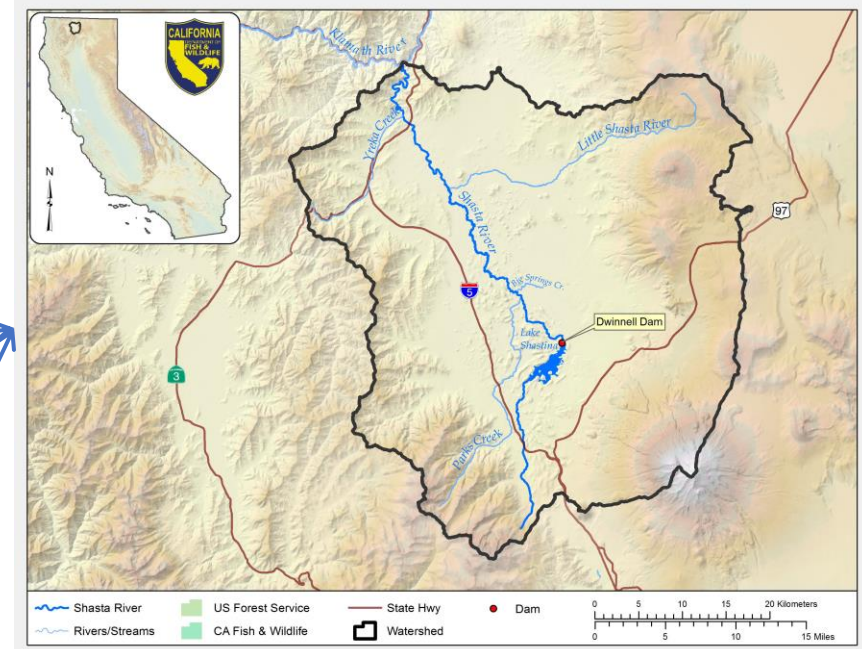
State Water Resources Control Board – Division of Water Rights  
Instream Flow Unit

September 24, 2024

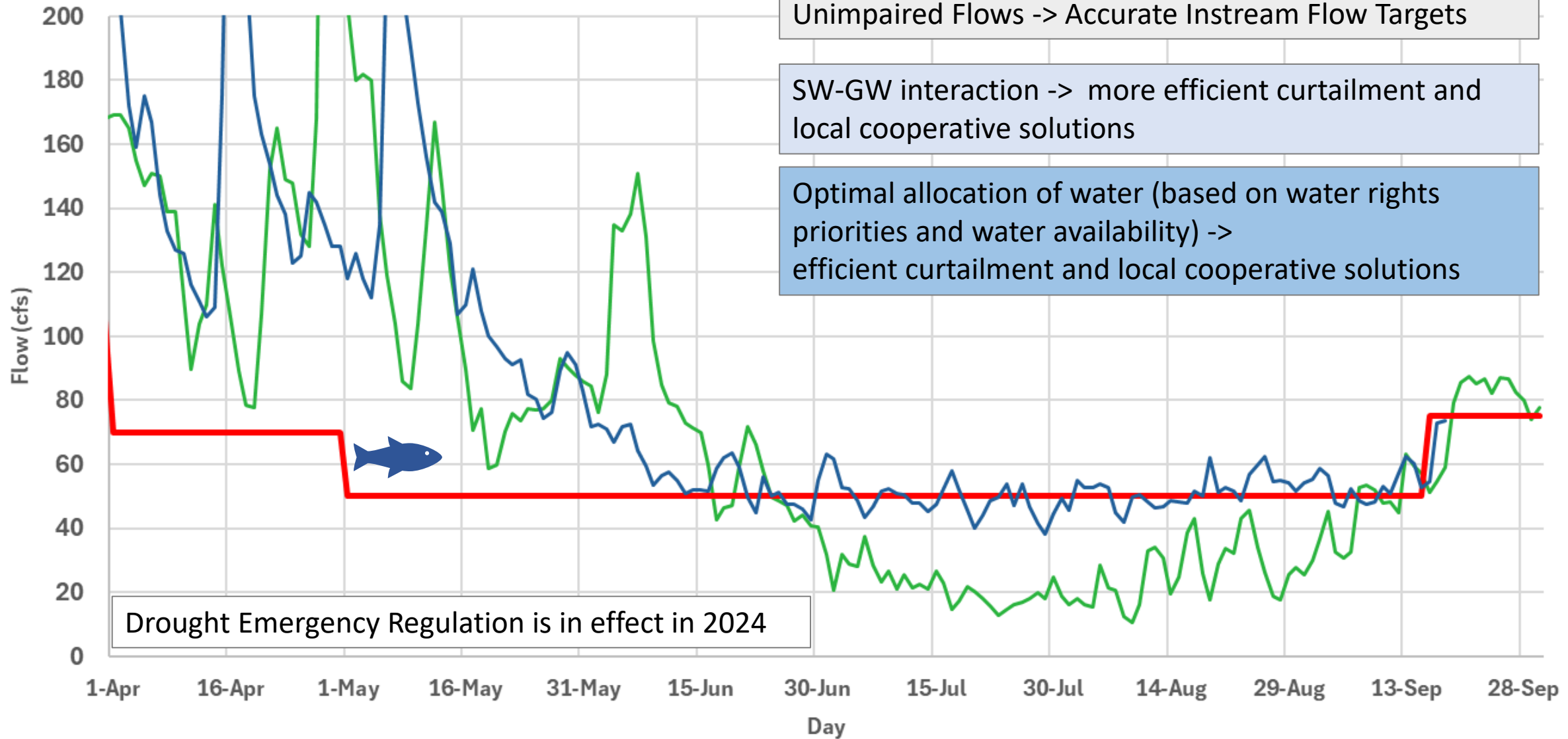
On May 10, 2021, Governor Newsom declared a **drought emergency** for 41 counties, including Siskiyou County, where accelerated action is needed to **protect public health, safety, as well as the environment**. The Klamath River is still subject to the 2021 drought proclamation and emergency provisions.

California Water Action Plan (WAP):

“The **State Water Resources Control Board** and the **Department of Fish and Wildlife** will implement a suite of individual and coordinated administrative efforts to **enhance flows** statewide in at least **five stream systems** that support critical habitat for anadromous **fish**.”



# 2010 and 2014 Hydrograph at USGS nr Yreka Gage: April through September



Unimpaired Flows -> Accurate Instream Flow Targets

SW-GW interaction -> more efficient curtailment and local cooperative solutions

Optimal allocation of water (based on water rights priorities and water availability) -> efficient curtailment and local cooperative solutions

Drought Emergency Regulation is in effect in 2024

— 2010 — Instream Flow Target — 2024

