



— BUREAU OF —
RECLAMATION

CalSimII with Combined Storage Projects

Presented by Cameron Koizumi

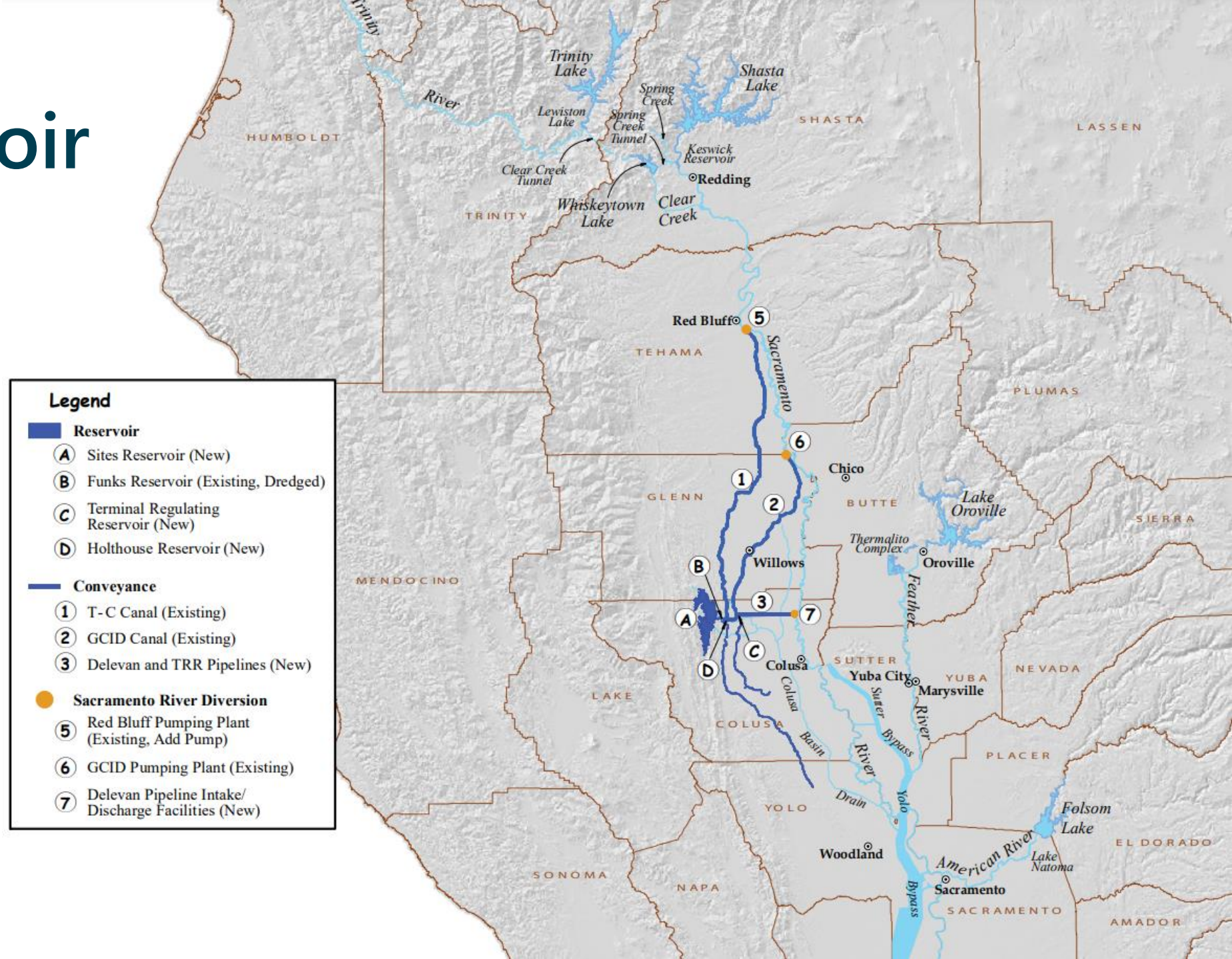
Is there Enough Excess Water?

- Multiple future storage projects are in the works that require excess water:
 - Sites Reservoir
 - Los Vaqueros Expansion
 - Sisk Dam Raise
- Limited excess water
- CalSimII was used to answer this question because the most current Storage Project models use CalSimII
- Modeling and analysis still in the works



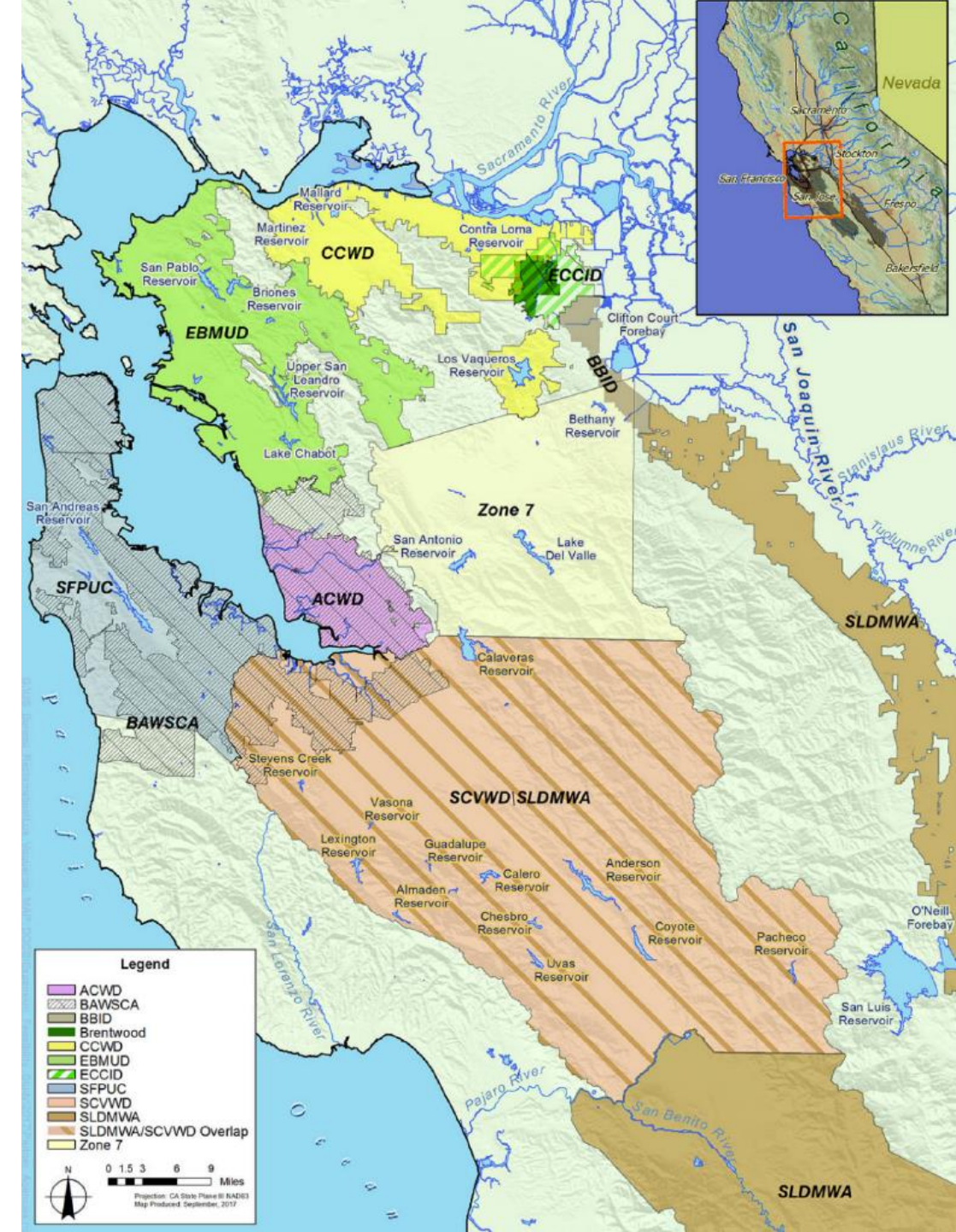
Sites Reservoir

- 1,500 TAF capacity
- Diverts excess water off the Sacramento River
- Storage split between local agencies, CVP, SWP, and other partner agencies
- For modeling purposes, CVP is assumed to have 16% buy-in (230 TAF)



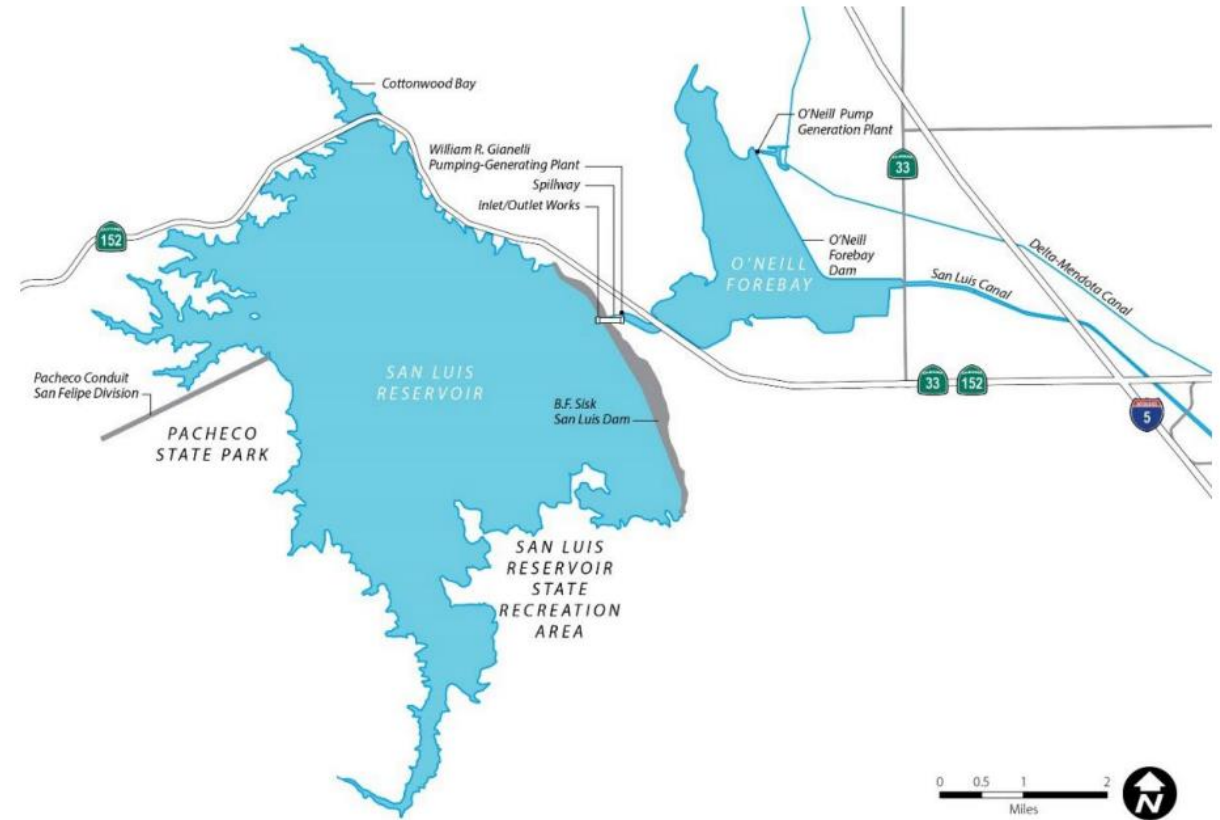
Los Vaqueros Expansion

- 115 TAF expansion, increasing capacity from 160 TAF to 275 TAF
- Diverts excess water from the Delta
- No CVP Account
- Improves water reliability
- Provides additional Level 4 Refuge deliveries South-of-Delta



Sisk Dam Raise

- 130 TAF expansion to San Luis Reservoir
- CVP Portion of San Luis increased from 972 TAF to 1,102 TAF
- No additional modeling assumptions



Interactions Between Storage Projects

- Based on Water Rights and CVP priorities, Sites Reservoir can divert water only after the other storage projects are
- Priority of diversions for San Luis Reservoir and Los Vaqueros Reservoir unchanged in the model
- Both Sites Reservoir and the Los Vaqueros Expansion are intended to provide Level 4 Refuge deliveries



Models

- Base (No Storage Projects)
 - Sites
 - LVE2
 - Sisk
 - Sites&Sisk
 - LVE2&Sisk
- Combined:
 - Contains all three storage projects
 - CVP allocations set to the larger of the Sites&Sisk and LVE2&Sisk models for comparative purposes
 - Other CVP benefits from each storage project will be compared to the benefits seen in their respective, solo models





— BUREAU OF —
RECLAMATION