



Photo credit: John Hannon, Reclamation



# Light at the End of the Tunnel: - The Endgame

Randi Field, US Department of the Interior, Bureau of Reclamation



# Remaining Project Milestones

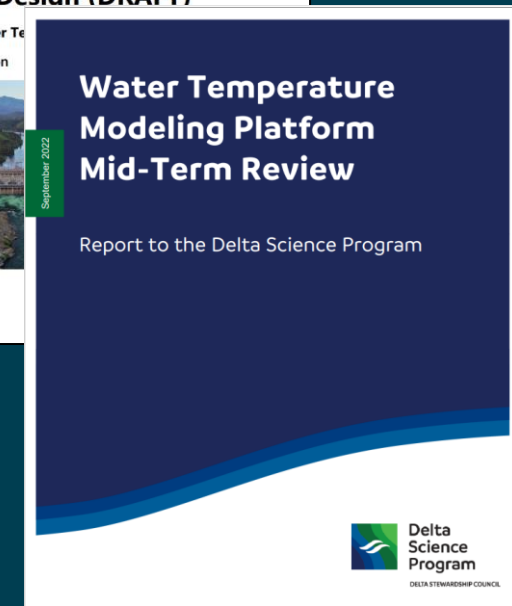
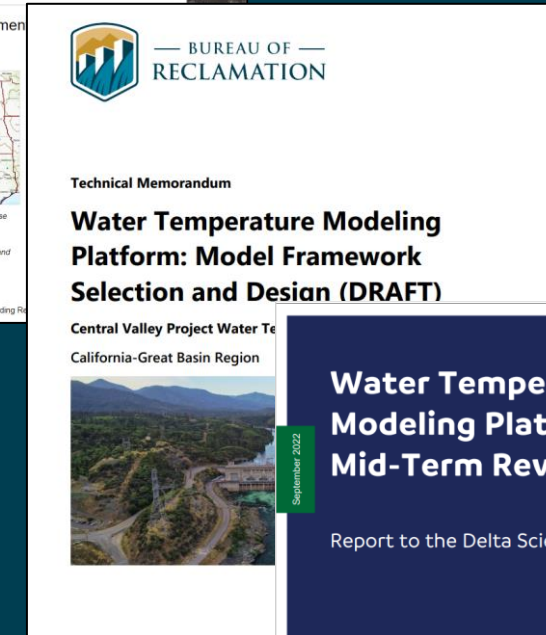
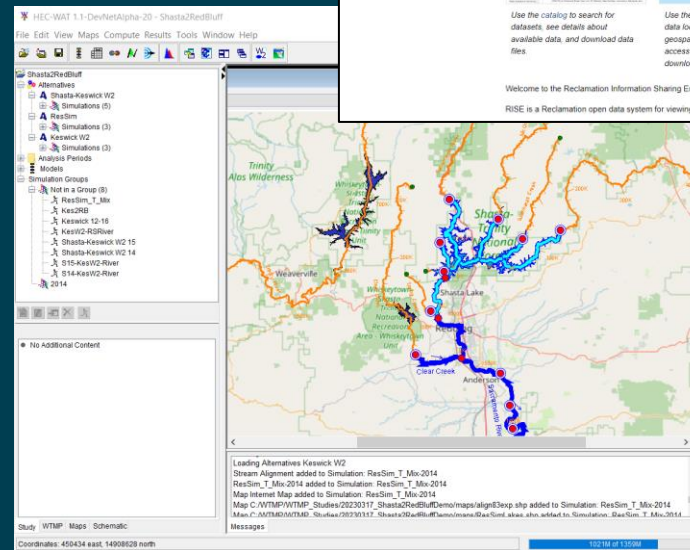
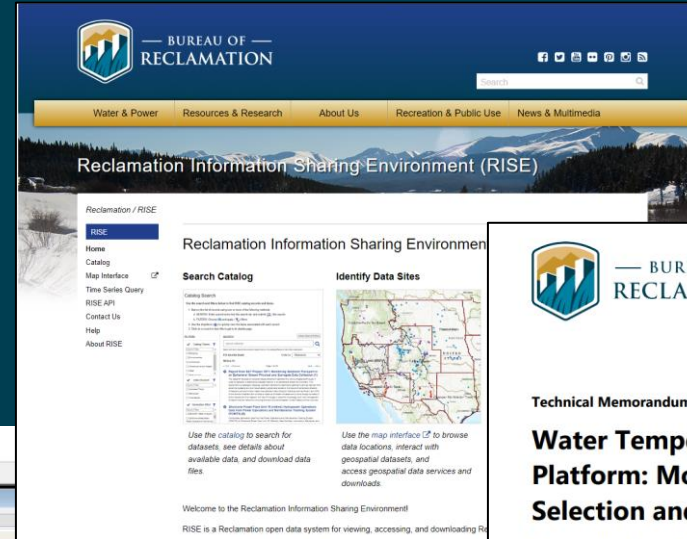
- WTMP implementation
  - 5/23 - Tool development testing version [*project team only*]
  - 6/23 - Data management system testing deployment [*project team only*]
  - 8/23 - Information distribution for the final independent peer review
  - 9/23 - Final independent peer review
  - 9/23 - Platform implementation completion for acceptance review [*project team only*]
  - 10/23 - Platform showcase in MTC 10 on 10/5
  - 11/23 - Final independent peer review report
  - 12/23 - Reclamation's response to final independent peer review comments and suggestions
  - 3/24 - Final platform documentation completion
- WTMP roll-out Spring 2024





# Roll Out Products

1. Model Platform
2. Data interface – RISE
3. Technical Memorandums
4. Peer Review Reports



# “Living Modeling Platform”

- Perspectives **after** the WTMP’s first deployment and rollout:
  - The products from the current implementation will continue to evolve with additional development/refinements on individual models and overall platform.
  - Continued supporting activities include:
    - Continued/improved data collection for improving quality of model analytics
    - Model refinement as facilities are upgraded/modified and new facilities are constructed
    - Re-assessment of modeling needs, associated model development and refinements, and model evaluation and calibration/re-calibration
    - Response to advancement in technology
    - A potential user group extended from the current Model Technical Committee



# End Game? Or Just the Beginning?

- Well designed WTMP platform built by consultant team is set for deployment by Reclamation:
  - Making the workflow process “smarter” by leveraging technology
  - Compatible with Reclamation’s small staffing pool
  - Implementing an efficient Data Management System
    - Advanced data processing error flagging and gap filling techniques
  - Streamlined software capabilities
    - Built in data retrieval and error checking
    - Multi-ensemble/multi-model functions
    - Automated repetitive tasks (e.g., results reporting and performance evaluation)
    - Flexibility to accommodate changes and technology advancement



# How can the WTMP be Sustained?

- **With your continued support and contribution!**
- Reclamation – WTMP management
- USACE – Model and framework software management
- Various agencies - Data feeds
- Modeling community - Continued engagement







Photo credit: John Hannon, Reclamation



# CVP WTMP: Q&A

## Contacts:

- Randi Field: [RField@usbr.gov](mailto:RField@usbr.gov)
- Mike Deas: [mike.deas@watercourseinc.com](mailto:mike.deas@watercourseinc.com)
- Tom Evans: [tom@rmanet.com](mailto:tom@rmanet.com)
- Jeff Schuyler: [jeff@eyasco.com](mailto:jeff@eyasco.com)
- Craig Addley: [craig.addley@stantec.com](mailto:craig.addley@stantec.com)
- Yung-Hsin Sun: [sun.yunghsin@sunziconsulting.com](mailto:sun.yunghsin@sunziconsulting.com)

