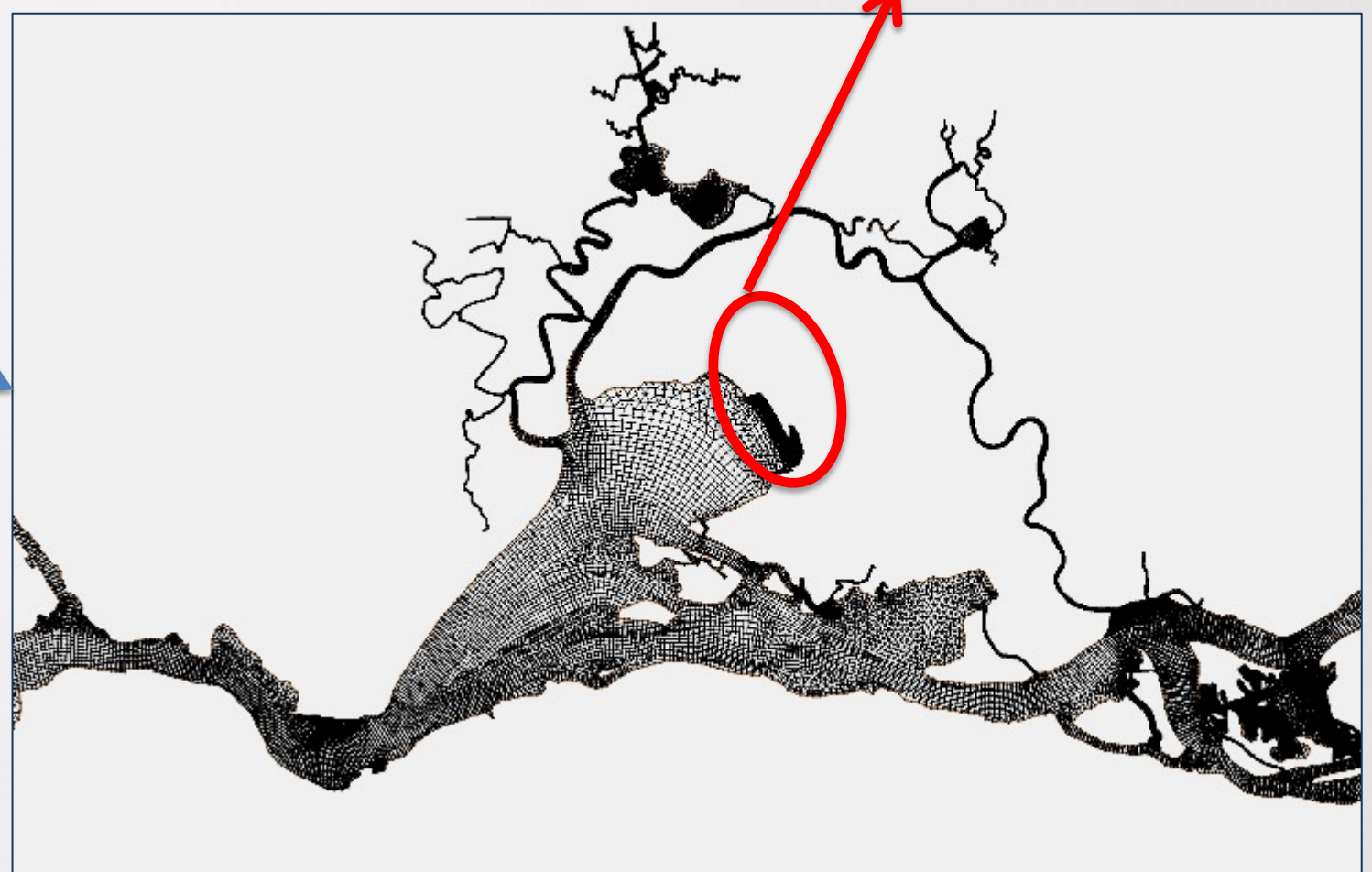
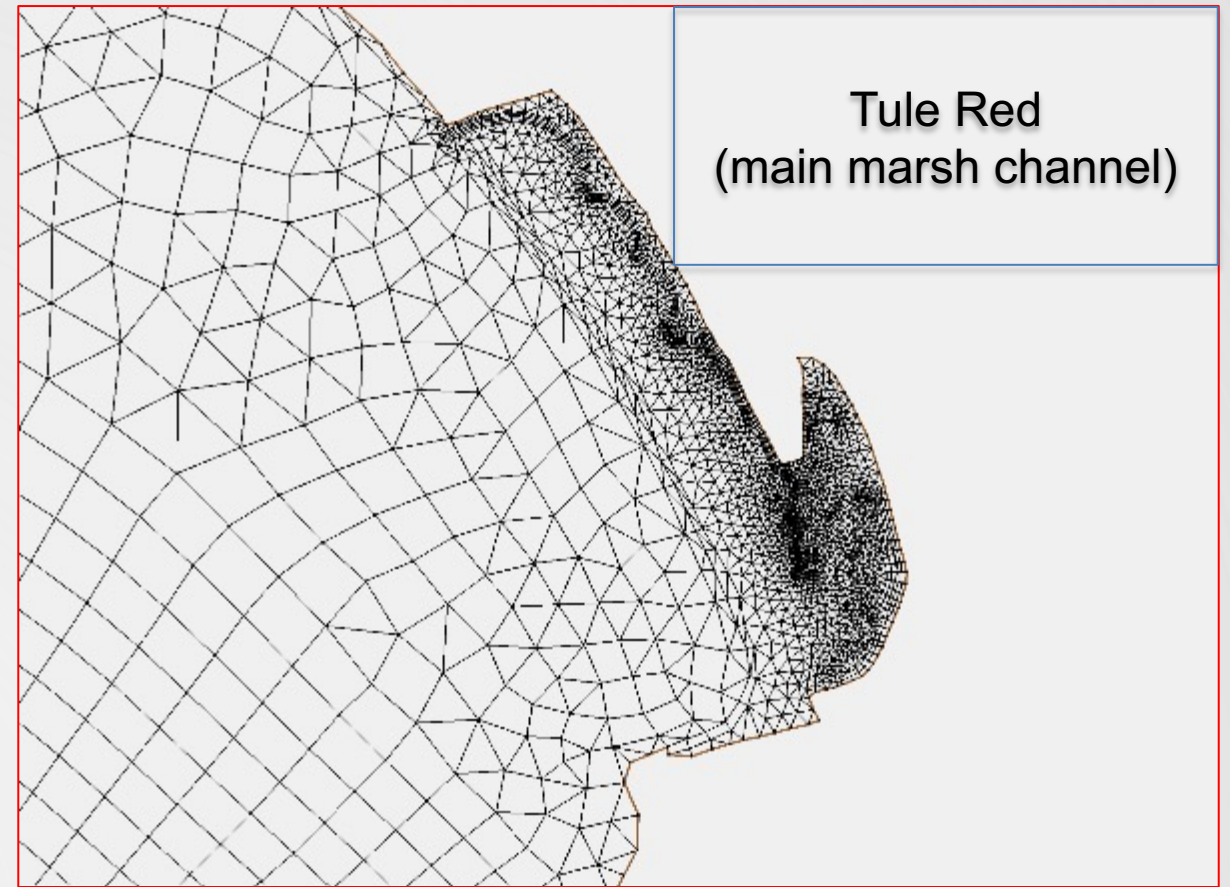
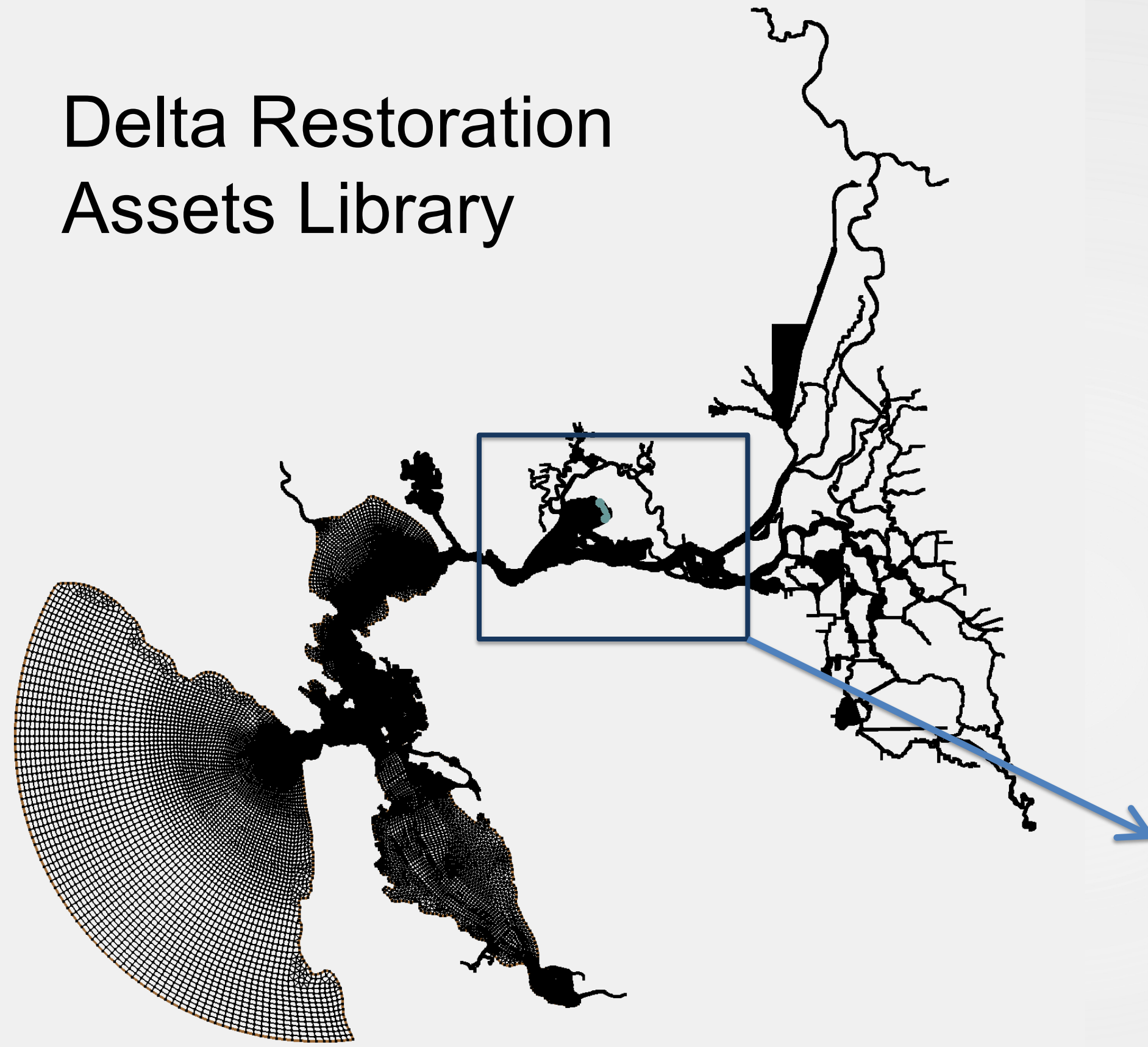


# Delta Restoration Assets Library



# Some Problems

- Eco-Restore and other Delta programs study projects at disparate levels of design and implementation
- There are institutional disincentives to sharing the data
- Everyone does it their own way

## Site list for current work:

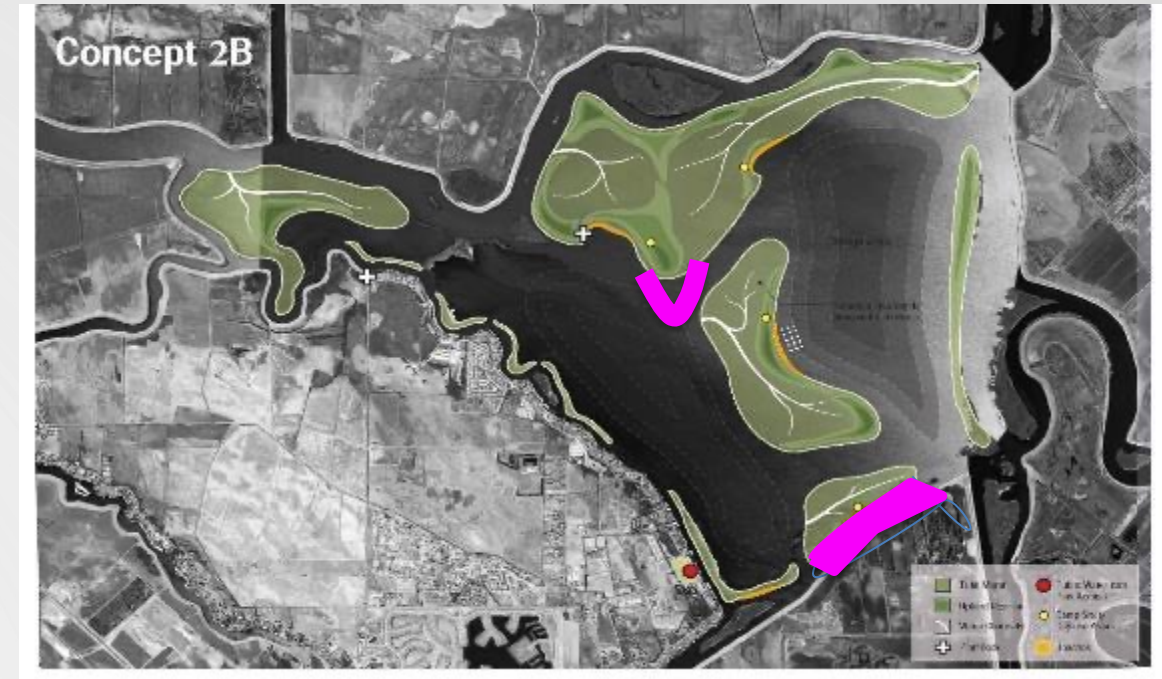
- Yolo Flyway Farms Tidal Habitat Restoration Project
- Lower Yolo Ranch
- Dutch Slough Tidal Habitat Restoration Project
- Hill Slough Tidal Habitat Restoration Project
- McCormack Williamson Tract Tidal Habitat and Floodplain Restoration
- Lookout Slough Tidal Habitat Restoration and Flood Improvement Project
- Prospect Island Tidal Habitat Restoration Project
- Little Egbert Tract
- Lindsey Slough
- Decker Island
- Franks Tract





# Restoration Asset Library

- Collect together
  - Project narrative
  - Digital Elevation Model
  - CAD work and GIS linework that show things like levee crest breaks and that might allow a higher res surface
  - SCHISM model grids (this is the only SCHISM-specific item, the rest is model neutral)
- Pan project description of how to describe design stages, completion status, and of how to solve problems
- Seeking input on what modelers would like to see archived.



# Site list that is on-deck this year

- Yolo Flyway Farms
- Lower Yolo
- Dutch Slough
- Hill Slough
- McCormack Williamson
- Lookout Slough
- Franks Tract
- Prospect Island
- Little Egbert Tract
- Lindsey Slough
- Decker Island

