

Update on the Central Valley Unimpaired and Natural Flows

CWEMF Annual Meeting March 20-22, 2017
Folsom, CA

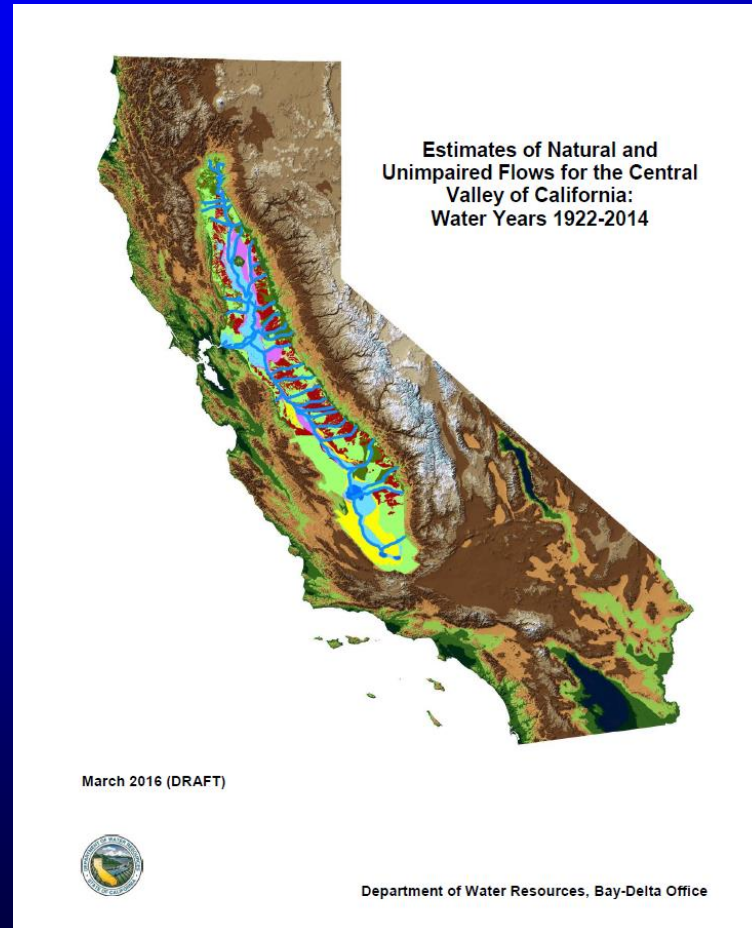
(Pop-up Session)

Guobiao Huang and Tariq Kadir
Bay-Delta Office
California Department of Water Resources



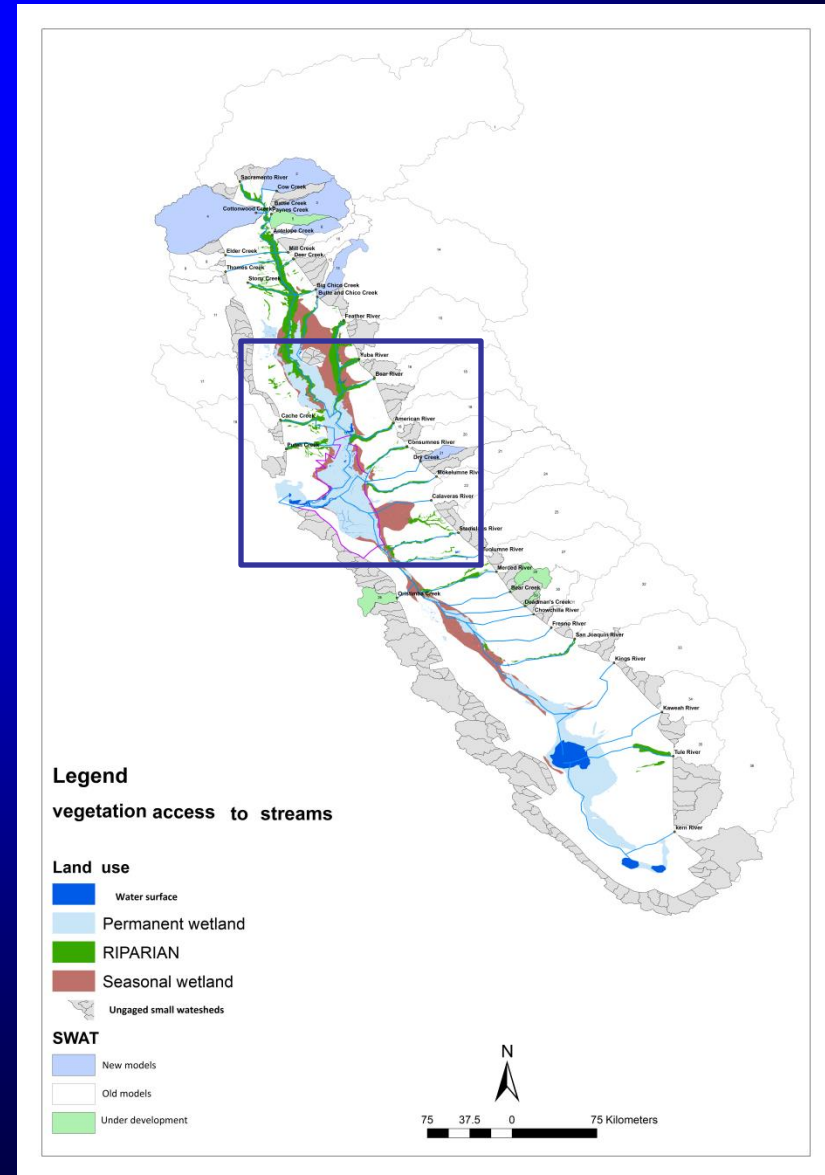
Draft Report published (March 2016) on the web

<https://msb.water.ca.gov/documents/86728/a702a57f-ae7a-41a3-8bff-722e144059d6>
(Just Google Natural Flow)



New Updates

1. Both unimpaired flow (UF) and natural flow (NF) data were extended to WY2015 (WY1922-2015, UF monthly; NF daily).
2. Rim watersheds: more SWAT models for the 36 rim inflow locations (Cow, Battle, Cottonwood creeks, etc.), now only 4 minor streams use USGS gauge data or related to nearby SWAT watersheds.
3. Valley floor: C2VSim/IWFM-2015 daily stream kinematic wave routing to better simulate streamflow travel time and in-stream storage (e.g. Lake Shasta to Verona, ~3 days)
4. Better representation of natural flood basins (wetlands); Sensitivity of overflow threshold and channel capacity.
5. New draft report to be released in June 2017. Submission of manuscript for journal publication soon.



Map Zoom-in

