

IWFM, IDC and C2VSim Status Update

CWEMF Annual Meeting

Folsom, California

March 20 – 22, 2017

Can Dogrul, Charlie Brush and Tariq Kadir
California Department of Water Resources



C2VSim-2015 Status Update

- C2VSim-2015-CG
 - Migration to IWFEM-2015 engine complete
 - Element-level land use developed for WY 1922-2015
 - Work continuing on extending other input time-series data (diversions, precipitation, etc.) to September 2015
 - Calibration during summer 2017
 - Update documentation
 - Public release by December 2017
- C2VSim-2015-FG
 - Complete framework during summer 2017
 - Calibration by summer 2018
 - Develop documentation
 - Public release by December 2018
 - Beta version possibly available before December 2018



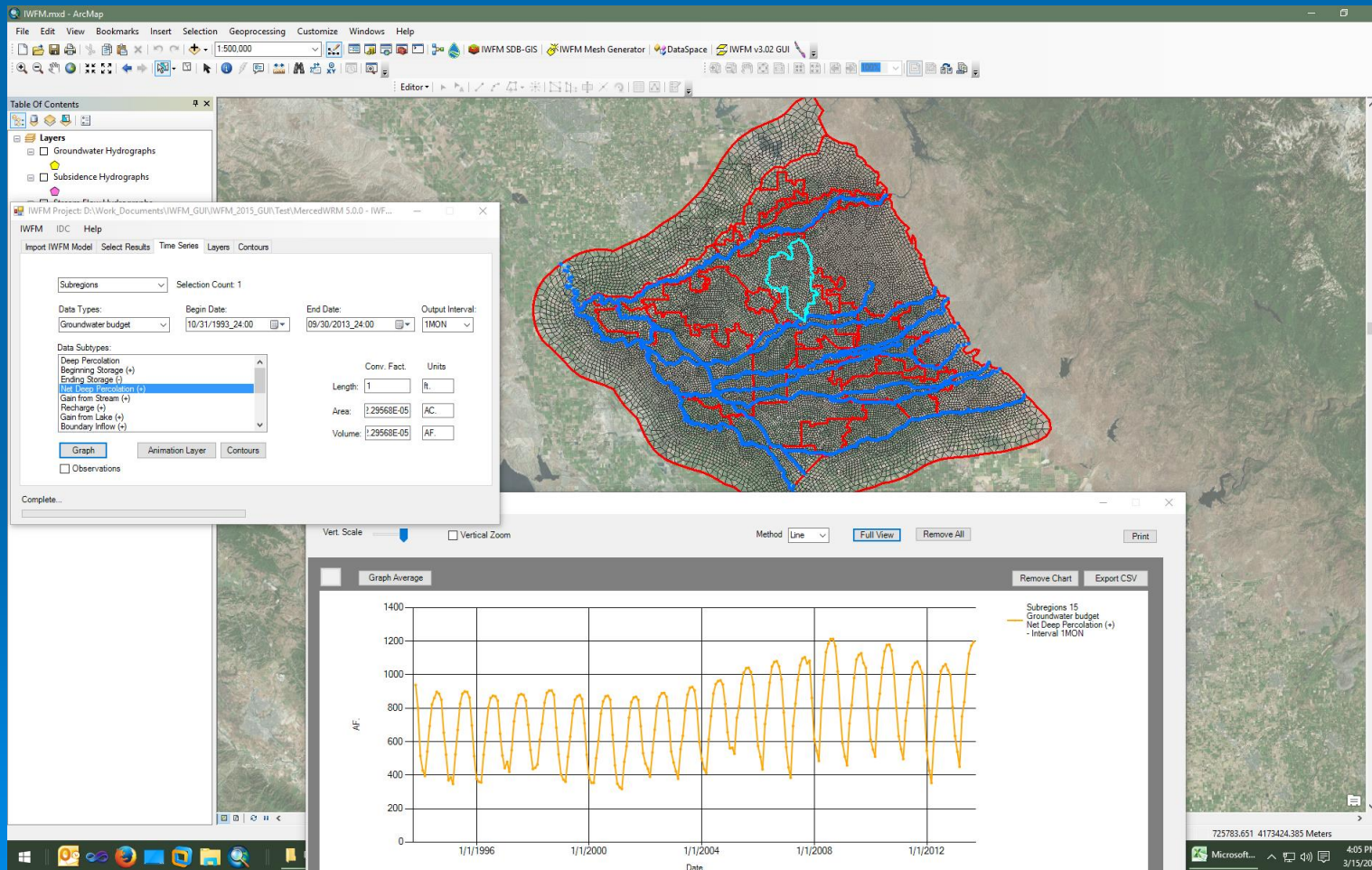
New IWFM / IDC Features

- Root Zone Package
 - Simulation of root zone and land surface processes at subregional level (as opposed to at cell level) for backward compatibility, developing screening tools, etc.
 - Z-Budget output for root zone flows
 - Z-Budget output for land and water use
- Stream Package
 - Ability to link multiple groundwater nodes to a single stream “node” (e.g. simulation of Yolo Bypass in a fine grid model)
- Lake Package
 - Computation of lake outflow defined as an elevation-versus-outflow type rating table (developed for C2VSim natural flows simulation)



Visualization and Analysis Tools

- IWFM ArcGIS GUI



Visualization and Analysis Tools

- Z-Budget Data Import with IWFM Excel Add-in

Z-Budget To Excel (v2015)

Choose Z-Budget HDF5 File

D:\Work_Documents\C2VSIM\C2VSim-2015\Results\CVlandwater_ZBud.hdf

Import zone list from Z-Budget text file
 Zone list is specified in this Excel workbook

Z-Budget Text File

Choose Zone List Text File

D:\Work_Documents\C2VSIM\C2VSim-2015\ZBudget\CV_DAU.dat

Output Conversion Factors and Units

Area:
Volume:

Output Begin Date/Time:
Output End Date/Time:
Output Interval:

Zone List

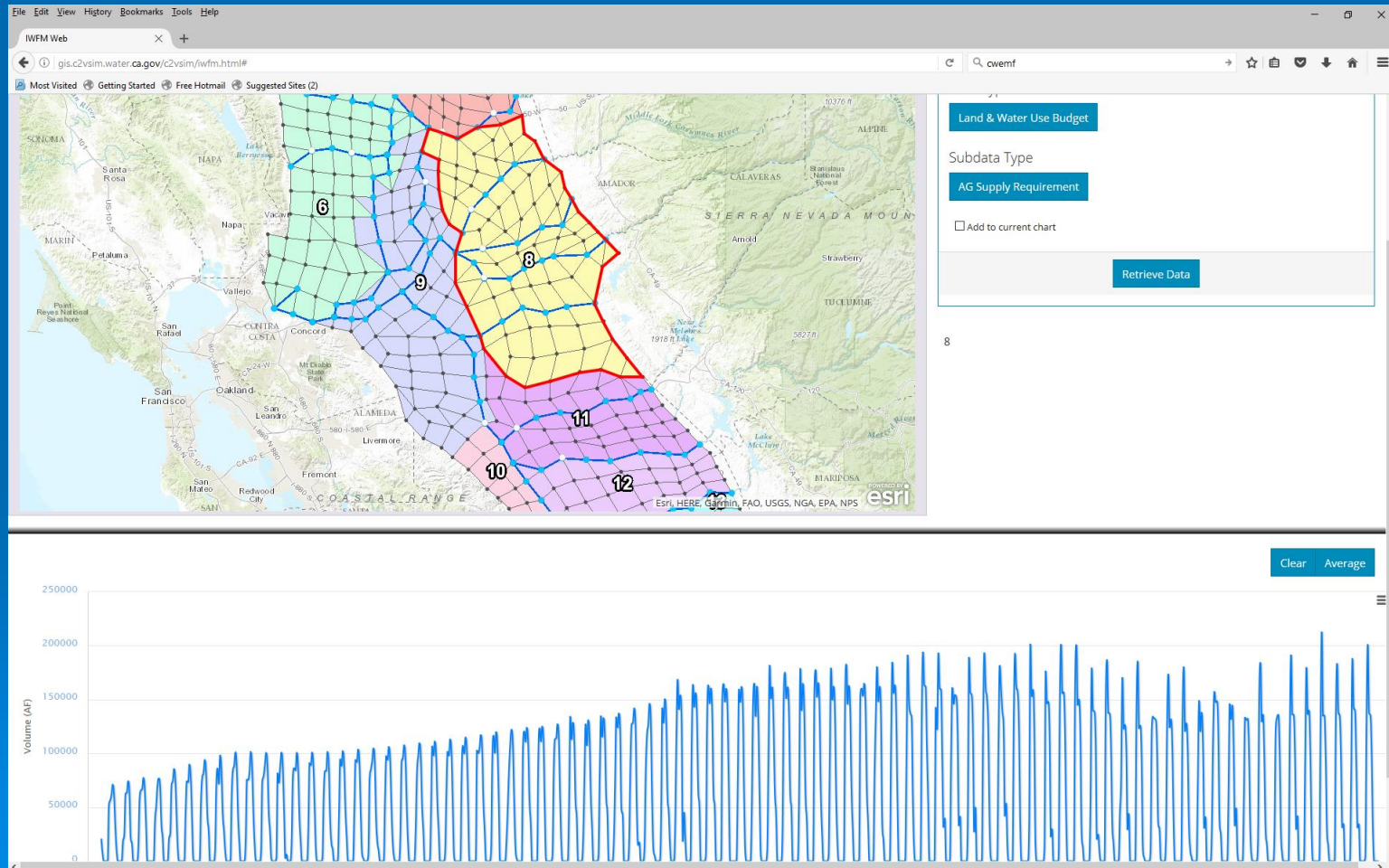
Columns for Data Import

Ready ...



Visualization and Analysis Tools

- C2VSim Web Application



IWFM-2015 and IDC-2015 Training:
August – October time frame